

# FOR LEASE



DOWNTOWN APARTMENTS + OFFICE SUITES

## DOWNTOWN DOWNERS GROVE 1ST FLOOR EXECUTIVE OFFICE SUITES



*Under New Ownership*

2023 Exterior Renovations  
Coming Soon

Floor To Ceiling Windows  
Private Exterior Entrances  
On Site Parking  
Steps to Public Parking Garage

---

365 SF - 987 SF Available  
\$725 - \$2015/ Month

In Heart of Downtown Downers Grove Business District. Walk to Metra Train Station, Starbucks, Village Hall, Park District, Shops & Restaurants.

# 5202 Washington Street, Downers Grove



DOWNTOWN APARTMENTS • OFFICE SUITES



630.737.1200 Office  
630.453.1230 Mobile

**Theresa Schulz**  
tschulz@schulzproperties.com

947 Maple Ave, Downers Grove, IL 60515

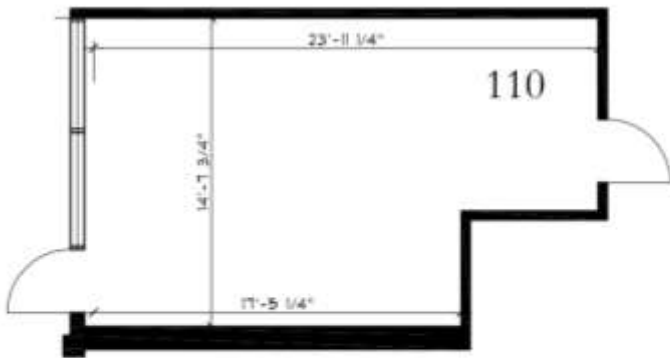
MAIN: 630.737.1200 \* CELL: 630.453.1230

# 5202 Washington Street, Downers Grove



CROSSING

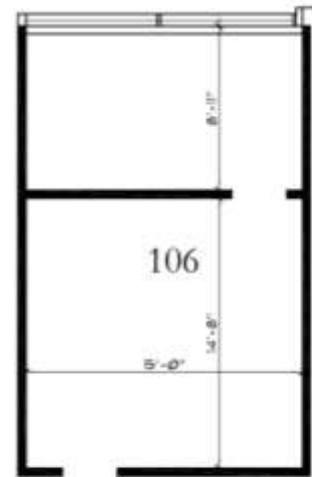
DOWNTOWN APARTMENTS - OFFICE SUITES



OFFICE SUITE 110

SCALE: 3/16" = 1'-0"

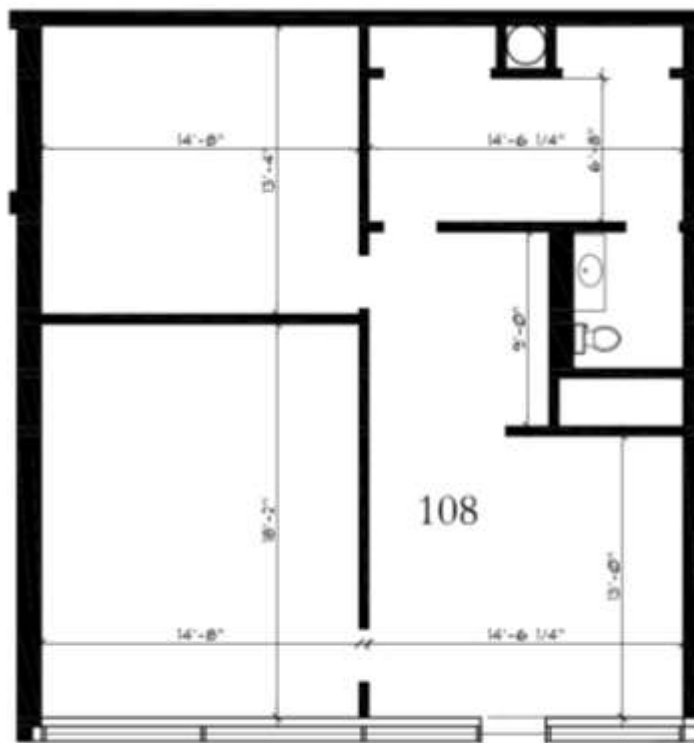
328 SF



OFFICE SUITE 106

SCALE: 3/16" = 1'-0"

365 SF



OFFICE SUITE 108

SCALE: 3/16" = 1'-0"

967 SF

**Schulz**  
PROPERTIES, LTD.

**Theresa Schulz**

[tschulz@schulzproperties.com](mailto:tschulz@schulzproperties.com)

[www.schulzproperties.com](http://www.schulzproperties.com)

# 5202 Washington Street, Downers Grove



DOWNTOWN APARTMENTS - OFFICE SUITES

Village Parking Garage



Washington Street



**Theresa Schulz**

[tschulz@schulzproperties.com](mailto:tschulz@schulzproperties.com)