

DOWNTOWN DOWNERS GROVE

1,154 SF 1st Floor Retail / Office

Great Location!

Private Office with open area

Private Bathroom

On-site Parking

Building Signage

Bonus Basement for Storage

Enter from Maple Ave. and Main St.

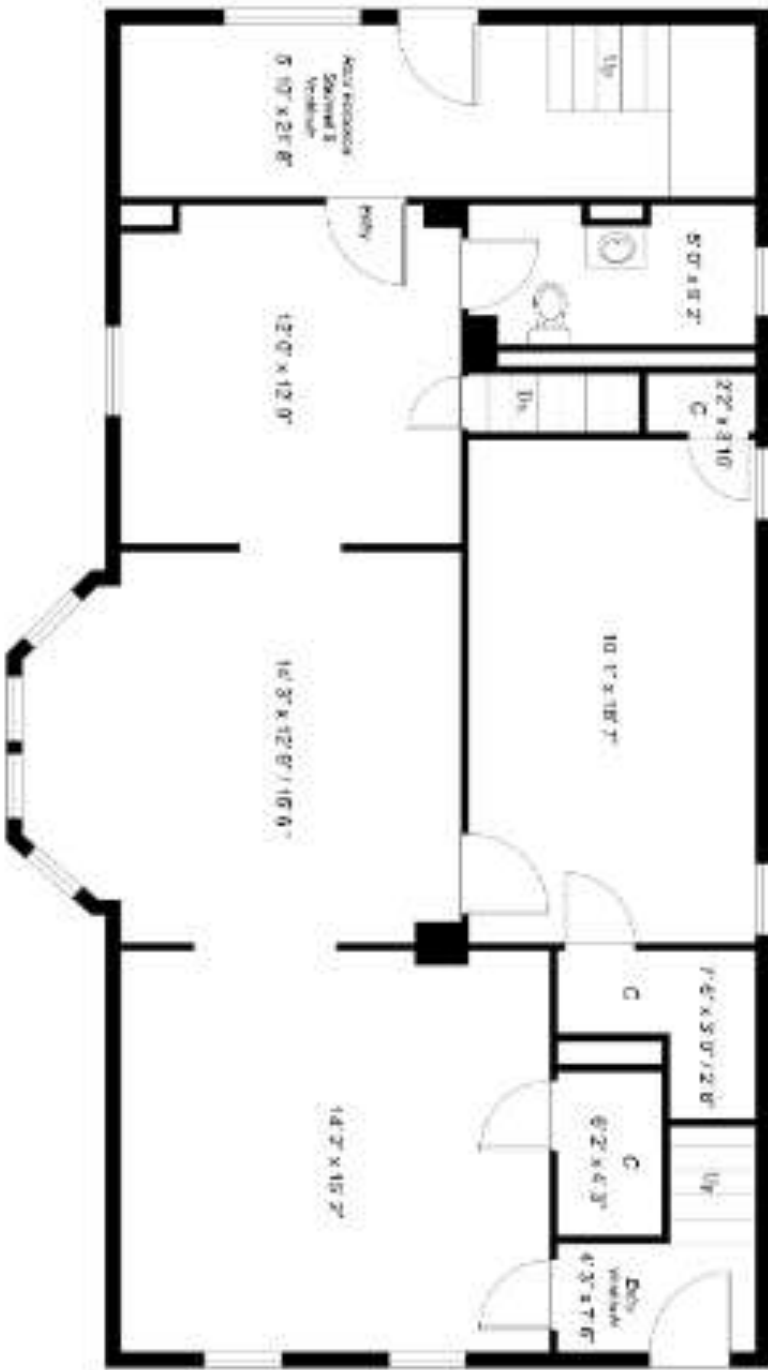
Visible from Maple & Main



Metra Commuters Per Day 2500 Ave HHI \$110

400 New DT Residential Units on Maple Ave.

1009 Maple Ave, Downers Grove, IL



Downtown Downers Grove

Walk to Metra Train Station, Starbucks, Peet's Coffee, Library, Post Office, Public Parking Garage, Tivoli Theater, Shops & Restaurants.

Perfect for Retail or Office!

Visible from Main St.



Becky Bossard

becky@schulzproperties.com

www.schulzproperties.com