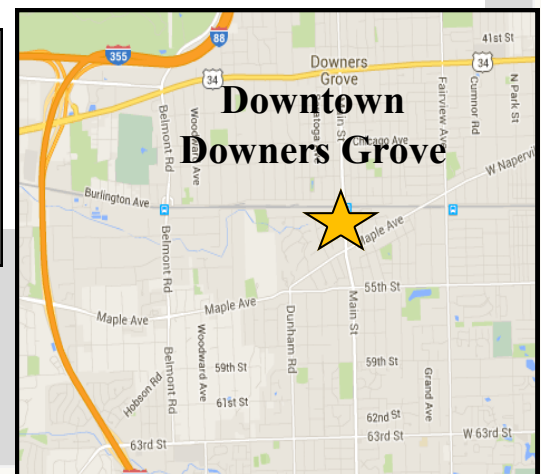


PRIME DOWNTOWN DOWNERS GROVE

1,290 SF Office For Lease



	<u>1 Mile</u>	<u>3 Miles</u>	<u>5 Miles</u>
Population	14,643	101,916	247,686
Metra Commuters Per Day	2500	Ave HHI \$110K	
<i>300 New DT Residential Units Opened Spring 2019</i>			



5157 Main Street, Downers Grove, IL

Prime Main Street Downtown

Downers Grove Location

Steps to parking garage! Walk to Metra Train Station, Starbucks, Peet's Coffee, Library, Post Office, Public Parking Tivoli Theater,

Shops &

Restaurants.

Elevator Access
to 2nd Level.



Exterior
Private
Balcony



Schulz
PROPERTIES, LTD.

Theresa Schulz

tschulz@schulzproperties.com

www.schulzproperties.com

947 Maple Ave, Downers Grove, IL 60515

MAIN: 630.737.1200 * CELL: 630.453.1230

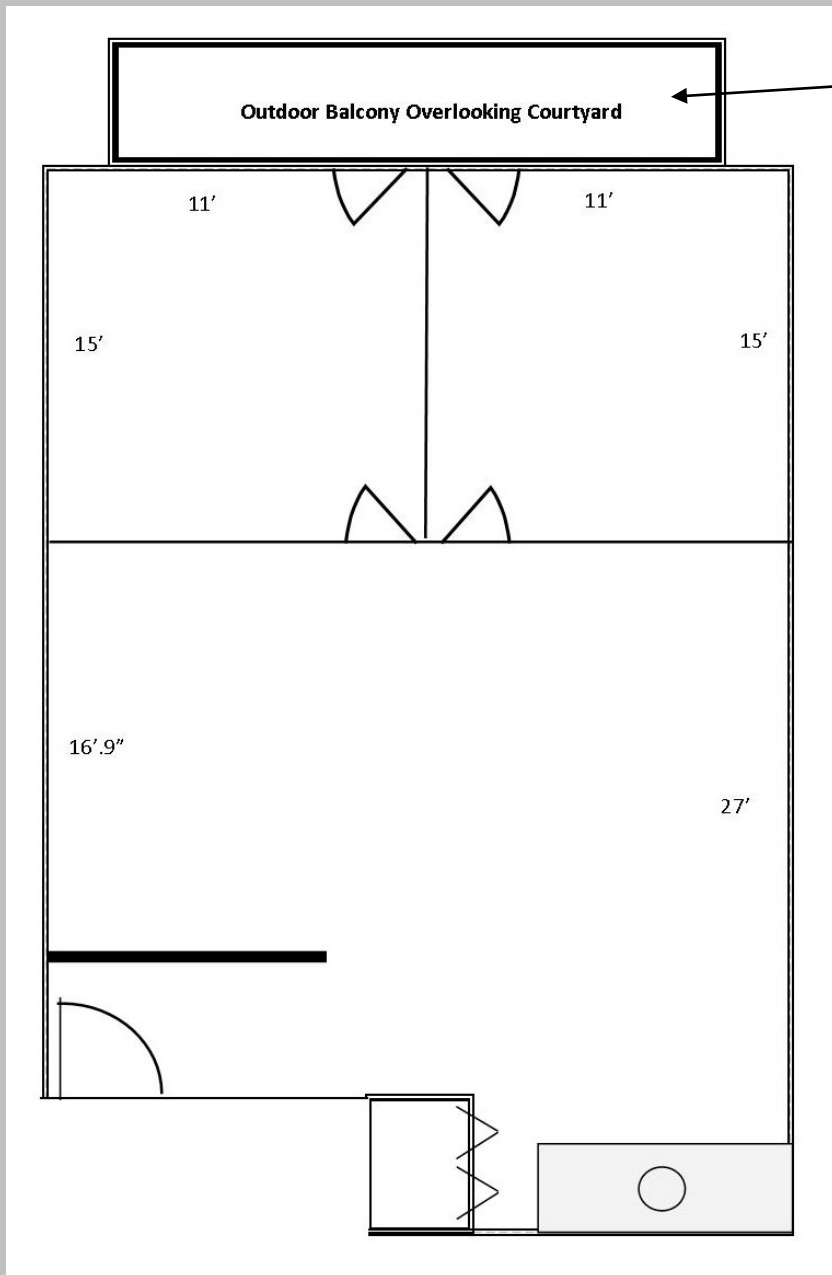
5157 Main Street, Downers Grove, IL

Exterior
Private
Balcony



SUITE 202 1,290 SF

Private Office Suite includes two private offices with private exterior balcony, open conference area, and updated kitchenette.



Theresa Schulz

tschulz@schulzproperties.com
www.schulzproperties.com